



General Assembly EUROPEAN NURSERYSTOCK ASSOCIATION

Essen (DE) - 24 January 2019

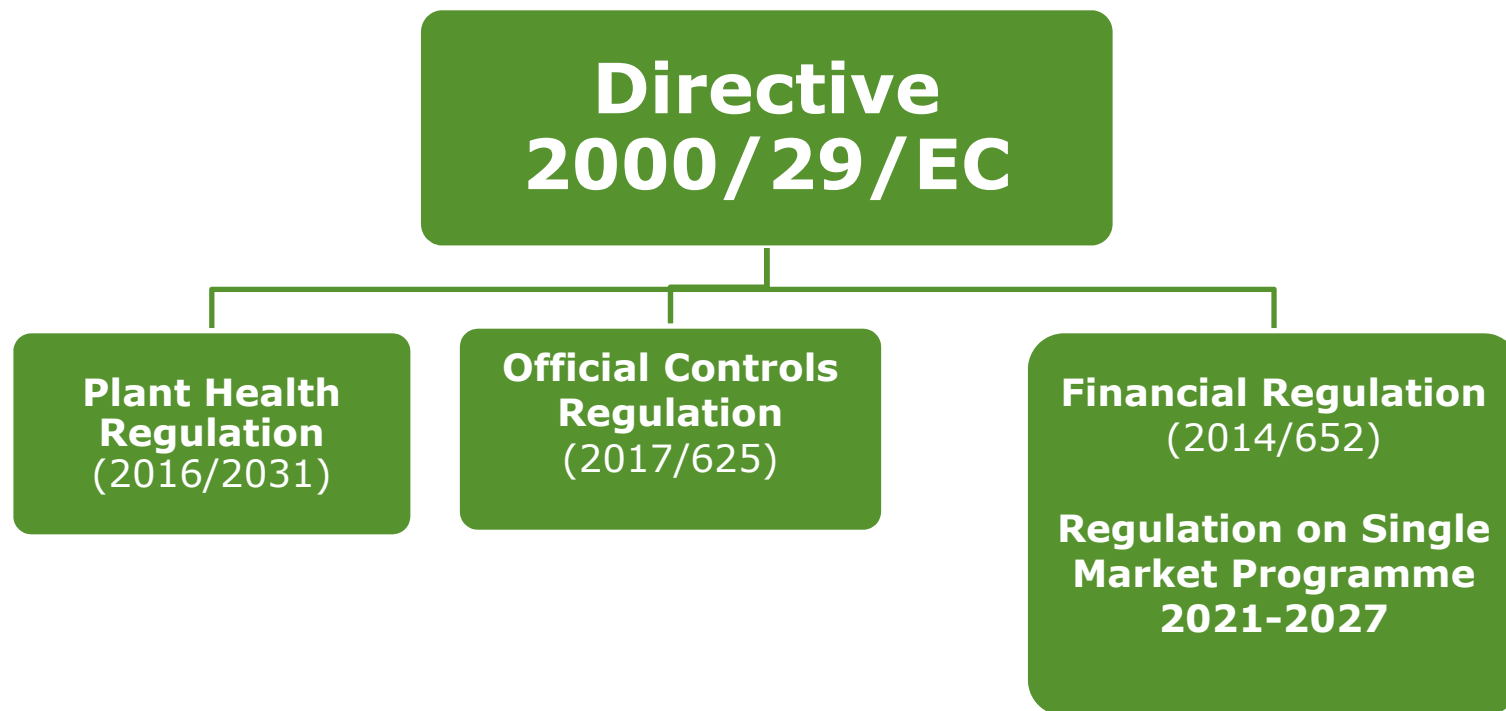


New Plant.Health Regulation (EU) 2016/2031

H. Arijs
DG Health and Food Safety – Plant Health Unit

*Health and
Food Safety*

Legal data



Objectives of the law



Better protection of EU plant health



More focus on **proactive action**



Compliance with **International Plant Protection Convention (IPPC)**

Risk-based; transparent; compliant with international standards



Key message



EU **open system** remains, subject to certain import conditions / prohibition



Only measures against regulated pests (regulated permanently or under temporary measures)



Exception: **temporary ban** high risk plants prior to risk assessment and new trade if linked to unknown risks

Problems to be fixed on PESTS:

- *Regulated pests **in many different lists + different legislations** (plant health + marketing directives)*
- *Limited **scientific knowledge**;*
- *Lack of **EU Reference Laboratories for plant pests**;*

Problems to be fixed on OUTBREAKS:

- *Lack of adequate resources to **prevent or react** against outbreaks;*
- ***Late detection** of new pests*
- *Little **involvement of operators** in pest prevention;*
- *No **obligations for surveys**;*
- ***Lack of preparedness**: e.g. contingency plans or simulation ex.;*
- *No **EU funds for surveys or support to farmers** for the value of the destroyed plants;*
- ***Not clear legal framework for precautionary measures** (e.g. high risk plants or emerging risks)*

Problems to be fixed on IMPORTS:

- ***Weak import regime*** (new major pests introduced such as *Xylella* or red palm weevil)
- ***Insufficient and not EU-harmonised import controls***
- ***No systematic record of imported plants*** (trees, fruits, vegetables, cut flowers, etc)
- ***Risks from unregulated plant material imports***
- ***Not clear legal framework for precautionary measures*** (e.g. high risk plants or emerging risks)

Problems to be fixed on CERTIFICATION

- ***Not clear which plant needs a plant passport for internal movement;***
- ***Different formats used by operators for plant passports – problem with visibility***
- ***Co-ordination needed between producing MS and exporting MS on voluntary basis.***
- ***Import and export of wood packaging material (ISMP 15 mark).***
- ***No detailed import control rules for plant health***

Pine Wood Nematode (*Bursaphelenchus xylophilus*)



Red palm weevil (*Rhynchophorus ferrugineus*)



Xylella fastidiosa



Basic concepts

quarantine pest (QP)

(from Dir 2000/29/EC)

- organism injurious to plants and plant products
- not present in the Union territory or, if present, not widely distributed and under official control
- its establishment there would have unacceptable economic, social and environmental impacts
- QP for whole Union or for Protected zone
- **PROHIBITED**

Regulated non- quarantine pest (RNQP)

(from Dir 2000/29/EC + PRM
Marketing Directives)

- pests present in the Union;
- causing important economic impact on plant reproductive material (PRM)
- **PROHIBITED IN PRM IF ABOVE TOLERANCE LEVEL**

Priority pests

= subdivision of QP for whole EU
To be listed by Delegated Act

Extra requirements

- **Annual surveillance** of EU territory
- **Contingency plan** for action in case of outbreak
- **Simulation exercises**
- **Action plan**
- **More information to public**

Regulated material

- **Plants for planting**, including seeds
- **Plants** (all live plant material: fruits & vegetables, cut flowers, bulbs, ...)
- **Listed plant products** (e.g. coniferous wood)
- **Listed other products** (e.g. WPM)

Registration and traceability

- **Registration of professional operators**
- Requirement **for professional operators** to **keep records ensuring traceability** of commodities when receiving from, or supplying to, other professional operators






European
Commission

Measures on INTERNAL MOVEMENTS and EXPORTS

- **Plant passports** required for the movement of all plants for planting
 - **PP = a standardised label accompanying regulated material moving within the EU or into a protected zone**
 - **For all plants for planting, seeds, specified plants and plant products**
 - **Issued by authorized operators**
 - **Between professionals**

	xxxxx / Plant Passport ¹
A xxxxx ²	
B XX ³ – xxxxx ⁴	
C xxxxx ⁵	
D XX ^{7 or 8}	

- Existing measures on movement of commodities within the EU will remain valid
- **Pre-export certificate** between Member States
- More specific rules on export or re-export phytosanitary certificates
- Wood packaging material: **"ISMP 15"** mark
- Other attestations

Surveillance of the territory

- ✓ **Multiannual survey programme**
 - Annual surveillance for priority pests
 - Surveillance for emergency measures, PZ
 - Surveillance for EU pest status confirmation
- ✓ **EU co-financing**

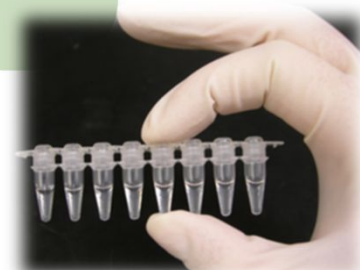


Notification of findings

✓ **Quarantine Pests and potential Quarantine Pests**



- By **professional operators + competent authorities**
- Where needed: **assistance by EU Reference Labs**



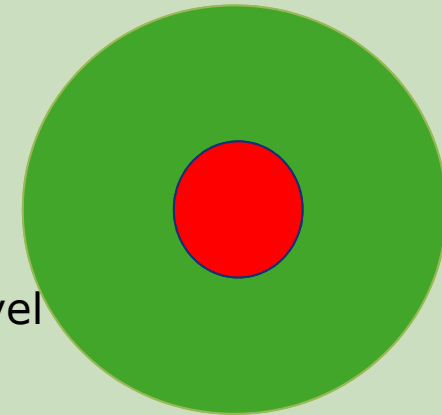
Information

- ✓ Relevant **professional operators** must be **informed by the competent authority**
- ✓ **Outbreaks notifications** public
- ✓ Citizens must be informed in case of **priority pests**



Outbreak management

- ✓ **Eradication approach** (standard obligation against QP)
- ✓ **Demarcated areas:**
 - **Infested zone**
 - **Buffer zone**
- ✓ **Containment :** only if agreed at EU level
- ✓ **EU co-financing**



Measures on Quarantine Pests

- **Multiannual survey programmes**
- **Union measures** for specific **Union QP** if action is required at Union level (e.g. Xylella or Pinewood nematode)
- **Temporary national or Union measures** against pests which are not fully assessed, but could qualify as Union quarantine pests
- **More stringent national measures**, as long as they do not impact on internal market

Measures on IMPORTS

- **Phytosanitary certificates** required for the import of all plants, unless excepted through an implementing act
- Current lists of **prohibited commodities** and **special import requirements** (Directive 2000/29,) remain valid.
- **High risks plants**: banned pending full risk assessment.
- **Temporary measures** against new trade (yet unknown risks).
- **Wood packaging material** only imported with the international mark "**ISPM 15**" confirming treatment against pests
- Other attestations

High risk material

Plants, plant products, other objects

Preliminary assessment: potential pathway for pests with unacceptable risk at import

Import prohibition

Exemption possible

- **Request + Technical dossier**
- **Risk assessment**
- **Risk management** : if yes, under which conditions?
- **Vote in Standing Committee**

Import checks

- ✓ Systematic **documentary check** of regulated material
- ✓ **identity and physical check** for plants for planting : all consignments checked
- ✓ **Reduced frequency** for fruits, cut flowers, wood

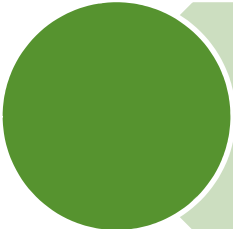
Rules under the Official Control Regulation



Union expenditures (Regulation 2014/652)

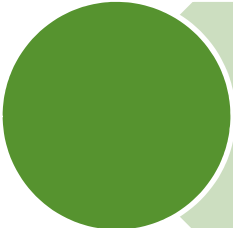


General rules applicable to animal health, plant health, food safety



Specific rules (**plant health**):

- **Emergency measures**
- **Survey programmes**



Support to MS + **compensation to owners** of destroyed plants



Union expenditures under the new Single Market Programme (2021-2027)

- **More simplified procedures;**
- Plant Health rules **aligned** with Animal Health

- ✓ **Emergency measures (annual)**

- Unexpected outbreaks;

- ✓ **EU co-financing (annual/multiannual)**

- Eradication and control of existing outbreaks
 - Surveys
 - Compensation to farmers

- **Possibility to help neighbouring third countries**

Plant health provisions under the OCR

- Specific plant health rules for internal movements
- Specific rules on import controls
- Designation of European Union Reference Laboratories (EURL)
- Recording of imports in IMSOC

Plant health provisions under the OCR

Specific rules on import controls

- new rules for the phytosanitary sector:
 - details of identity and physical checks
- rules to be included in the new legislation:
 - identity and physical checks at destination
 - reduced frequency for certain products
 - Minimum requirements for border control posts



EUROPHYT

- European Union Notification System for Plant Health Interception
- A rapid alert system: notifications in the form of email



The International Year of Plant Health – 2020

- UN approved
- Key events
 - ✓ Ministerial IPPC meeting (April, Rome)
 - ✓ Global Plant Health Conference (October, Helsinki)
- Global EU-IPPC strategic partnership
 - ✓ Commodity&Pathway specific ISPMs
 - ✓ Emerging pests (Xylella, fall army worm)
- EU financial support





Further information:

http://ec.europa.eu/food/plant/plant_health_biosecurity